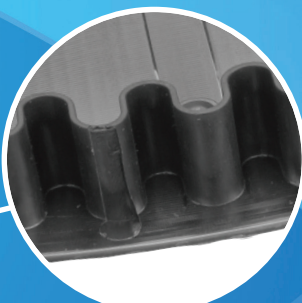
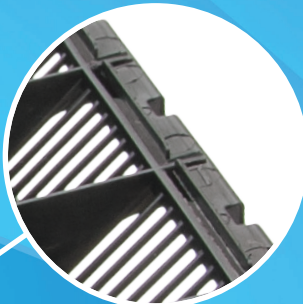
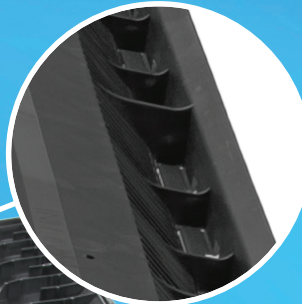




OmniRidge® Pro

Our **NEWEST** Advanced Feature Low Profile Vent!



Fully supported nail holes.

Continuous molded end plug and underlap prohibit weather infiltration.

PRO4-N FEATURES:

- Advanced low profile design.
- Includes 2½" ring shank nails, 30 nails per piece.
- Internal baffles.
- External "Omni" baffles.
- External Venturi baffle.
- "Posi-tabs" contour to shingles for improved weather protection.
- Weatherproof underlapping joints.
- 6 drain holes per side per foot.
- 18 square inches of Net Free Area per linear foot.
- 10 supported nail holes
- Preformed to 2/12 pitch.
- Fits roof pitches 2/12 to 16/12.
- Molded-in shingle nail lines, reinforced every 2 inches.
- Slot width guide lines.
- Continuous molded end plug for improved weather protection.
- **Lifetime Limited Warranty.**



Model	Length (ft.)	NFA (in. ²)	Roof Pitch	Packaged
PRO4-N	4'	72	2/12 To 16/12	10 Per Box

How many PRO4-N vents do you need?

ATTIC FLOOR SPACE IN SQ FT:	1000										1500										2000										2500										3000										3500																																																								
	Intake					Exhaust					Intake					Exhaust					Intake					Exhaust					Intake					Exhaust					Intake					Exhaust																																																													
EXHAUST SYSTEM	Exhaust	C416	C616	C816	105/190	140	SV-10	DA-4/IV-9	Exhaust	C416	C616	C816	105/190	140	SV-10	DA-4/IV-9	Exhaust	C416	C616	C816	105/190	140	SV-10	DA-4/IV-9	Exhaust	C416	C616	C816	105/190	140	SV-10	DA-4/IV-9	Exhaust	C416	C616	C816	105/190	140	SV-10	DA-4/IV-9	Exhaust	C416	C616	C816	105/190	140	SV-10	DA-4/IV-9	Exhaust	C416	C616	C816	105/190	140	SV-10	DA-4/IV-9	Exhaust	C416	C616	C816	105/190	140	SV-10	DA-4/IV-9																																											
PRO4-N	14'	11	7	4	4	4	3	4	4	7	20'	15	10	6	5	5	6	6	10	27'	20	14	8	7	6	8	14	34'	25	17	10	9	7	10	17	40'	29	20	12	10	9	12	20	47'	34	23	14	12	10	14	24	54'	40	29	17	14	12	16	28	61'	46	33	20	16	14	18	32	68'	52	37	23	18	16	20	36	75'	58	41	26	20	18	22	40	82'	64	45	29	22	20	24	44	89'	70	49	32	24	22	26	48	96'	76	53	35	26	24	28	52